

PINDLER

EST. 1947





HEARST CASTLE[®]

■ HEARST SAN SIMEON STATE HISTORICAL MONUMENT ■

Pindler is excited to present new additions to the Hearst Castle™ Collection. Inspired by a recent visit to the Castle, this exclusive collection includes wool and linen embroideries, plush velvets, and printed linen patterns constructed of the finest fibers and woven all over the world. This collection is a beautiful assortment of designs with the timeless elegance and lavishness of Hearst Castle™ showcased in a sophisticated and saturated color palette.

A portion of the proceeds from this collection goes to the preservation of the property, which is dedicated to preserving and interpreting the areas of historic architecture, landscapes, and decorative arts.

7123 Renacimiento

Renacimiento is an Exclusive Hearst Castle™ design inspired by an ornate wood carving found in the lower South Duplex Suite. The Duplex Suites were designed by Julia Morgan to accommodate more of Hearst's guests in Casa Grande. Our interpretation of the carving work was translated into a beautiful, large scale, floral design that is embroidered on a wool blended felt ground cloth. Renacimiento is offered in five colorways.



7123 Renacimiento | *Greystone*



7123 Renacimiento | *Lacquer*



7123 Renacimiento | *Lilac*



7123 Renacimiento | *Peridot*



7123 Renacimiento | *Sapphire*



Inspiration for Renacimiento
Ornate Wood Carving found in the
lower South Duplex Suite



7124 Provenca | *Champagne*



7124 Provenca | *Coral*



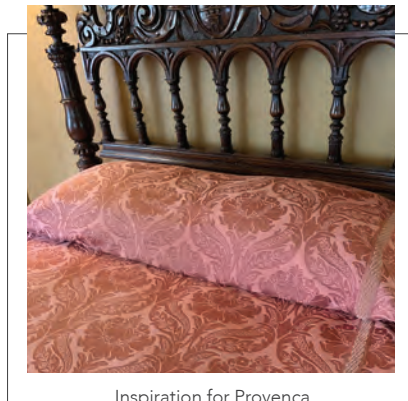
7124 Provenca | *Emerald*



7124 Provenca | *Sapphire*



7124 Provenca | *Wisteria*



Inspiration for Provenca
Bedspread found in Casa Del Mar



7124 Provenca

Provenca is an embroidered, and corded, damask design on a linen blended ground cloth. The motif of our interpretation was inspired by the bedspread found in Casa Del Mar, and the embroidery technique and colorations were influenced by the beautiful flowers in the gardens around it. Provenca is offered in five colorways.



7125 Hojas

Hojas was inspired by the bounty of fuchsia that is planted along the esplanade that encircles Casa Grande. This inspiration was translated into a full coverage foliage design, that is embroidered on a linen blended ground cloth, and features a beautiful ombre of color. Hojas is offered in five colorways.



7125 Hojas | Champagne



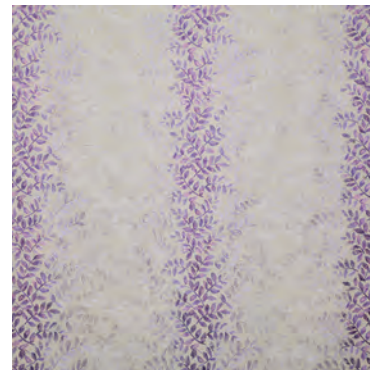
7125 Hojas | Coral



7125 Hojas | Peridot



7125 Hojas | Sapphire



7125 Hojas | Wisteria



Inspiration for Hojas
Bounty of Fuchsia planted along the
esplanade at Casa Grande



7126 Fiorito | Blossom



7126 Fiorito | Botanica



7126 Fiorito | Capri



Inspiration for Fiorito
Floral Shade of a Gilded Lamp



7127 Alameda

Alameda was inspired by an armchair found in one of the Doge's Suite bedrooms. The framed floral design of the woven chair fabric was translated into a new embroidery design, that features various techniques on a sateen ground cloth, and has both fresh and traditional multi-colored colorways. Alameda is offered in four colorways.



7126 Fiorito

Fiorito was inspired by the floral shade of a gilded lamp found in the sitting room of Casa del Sol. Fiorito is a classically elegant floral frame design, embroidered on a natural colored ground. The detailed embroidery showcases striking multi-colored colorways. Fiorito is offered in three colorways.



7127 Alameda | Botanica



7127 Alameda | Capri



7127 Alameda | Cielo



7127 Alameda | Classico

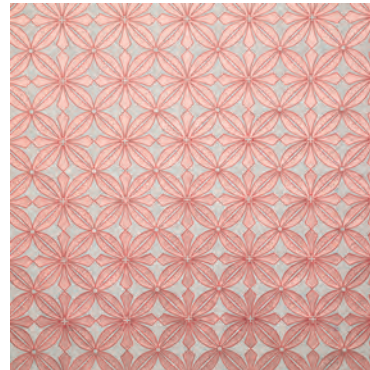


Inspiration for Alameda
Armchair found in a Doge's Suite Bedroom

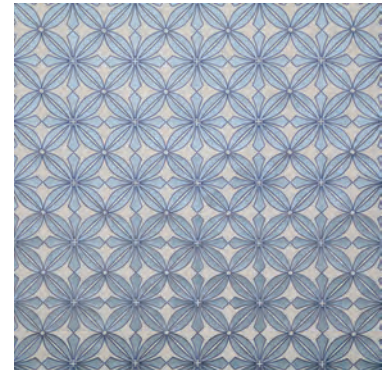


7128 Terrazza

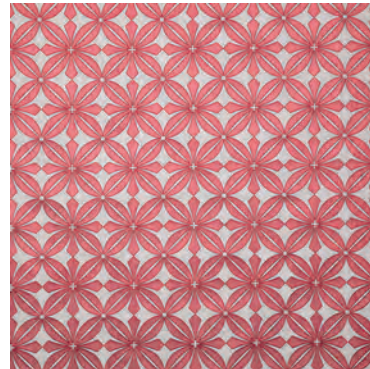
Terrazza was inspired by the geometric wood carving on the fascia of a desk found in a bedroom in the North Wing of Casa Grande. The carving was translated into a mid-scale design, which is embroidered on a faux silk ground, and that harmonizes back to the various new large-scale embroideries. Terrazza is offered in five colorways.



7128 Terrazza | Blossom



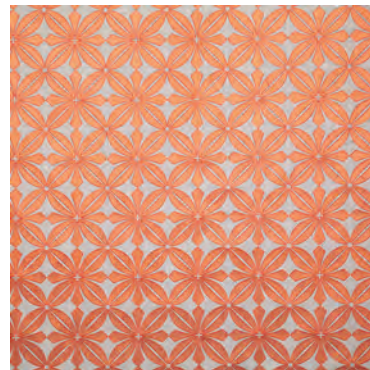
7128 Terrazza | Cielo



7128 Terrazza | Lacquer



7128 Terrazza | Leaf



7128 Terrazza | Persimmon



Inspiration for Terrazza
Geometric wood carving found on the
fascia of a desk in a bedroom



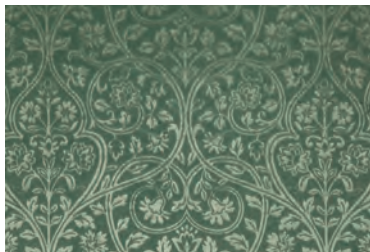
7129 Ferronerie | *Marmelleta*



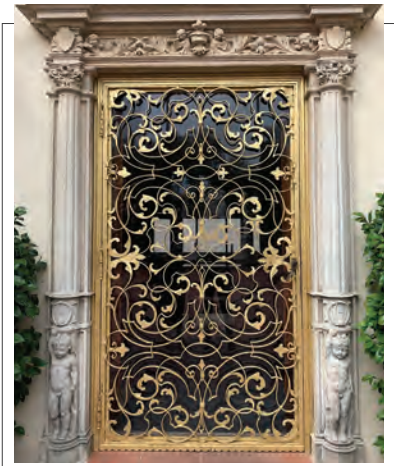
7129 Ferronerie | *Ruby*



7129 Ferronerie | *Sapphire*



7129 Ferronerie | *Verde*



Inspiration for Ferronerie (above)
Iron work on the front entrance
of Casa Del Mar



Inspiration for Esplanade (below)
Mosaic stonework flooring found in the
Morning Room of Casa Del Mar



P6472 Esplanade | *Mattone*



P6472 Esplanade | *Greystone*



P6472 Esplanade | *Sapphire*

7129 Ferronerie

Ferronerie was inspired by the magnificent iron work featured on the front entrance of Casa Del Mar. This grand design translates seamlessly to a jacquard velvet quality, which makes a dramatic statement in rich colorways. Ferronerie meets 30,000 double rubs and is offered in four colorways.

P6472 Esplanade

Esplanade was inspired by the carefully laid flooring in the east vestibule of the Morning Room, in Casa Grande. This mosaic stonework has been translated into a printed design on a textural linen blended ground cloth, which gives it a truly woven appearance. Esplanade meets 25,000 double rubs and is offered in three colorways.



Pindler has been fortunate to be given access to the vast and diverse collections and archives of fine decorative arts collected by William Randolph Hearst. Inspired by art, antiques, and beauty of the Castle, we are proud to present Exclusive Hearst Castle™ Collection. This exquisite collection is reflective of the grandeur, luxury, wonder, and mystique of this famous castle nestled in the hills above the California coast as we continue telling the story of Hearst's passion for all things beautiful.



HEARST  CASTLE®
■ HEARST SAN SIMEON STATE HISTORICAL MONUMENT ■
SCAN TO LEARN MORE

PINDLER
EST. 1947

800.669.6002 | pindler.com | To the Trade